



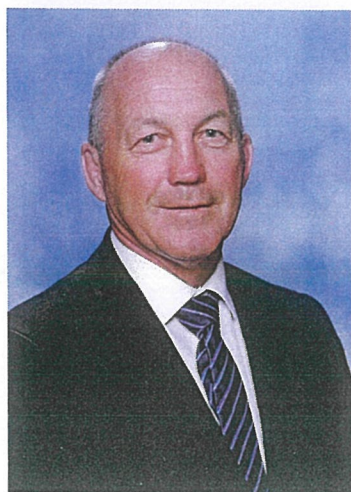
St Patrick's College Silverstream

No 15

Friday 27 September 2019

Vision Statement

St Patrick's College, Silverstream is a boys' school of excellence, founded on Catholic and Marist values and traditions where students develop knowledge, skills, attitudes and values which enable them to become compassionate, just and successful citizens. Our students are challenged and motivated to achieve personal excellence in an innovative learning environment enhanced by tradition, superb facilities, quality teaching and a supportive College community



Tēnā koutou katoa, Greetings everyone

Welcome to the end of Term 3.

During the last few weeks we have celebrated Tongan Language Week, Cook Island Language Week and Maori Language Week. The boys and the Community have engaged in these celebrations and during Maori Language Week Father John has celebrated Mass in Maori.

The last few weeks have seen a number of our sports teams have success in finals. Winter sports week also saw a number of our teams participating. I want to thank all the coaches and managers, both staff and parents, for supporting our boys to be able to participate in winter sport.

Enrolments have now been complete and the new Year 9's entering in 2020 have been visiting the College for testing and orientation. It is always great to see the excitement that surrounds this and the pride of the mentors who look after them during their time visiting the College.

This last week of term we have again focussed on the mental health and well-being of our community. We do have a problem not only in our College but in our Society. One of the biggest fears at this time of the year is anxiety and for Seniors who are leaving the realisation that their time at the College is coming to an end. For those sitting exams the fear of failure. Anxiety is self-doubt, the lack of confidence, both in you, yourself and those around you. Anxiety is others wanting to fix something that isn't even a problem. But more than anything anxiety is caring, it's never wanting to hurt someone's feelings, it is never wanting to do something wrong. More than anything it's the want and need to simply be accepted and liked. So we try too hard sometimes.

If you think someone is at risk, support them to reach the appropriate help and services as soon as possible. No problem is too big to overcome if people act with faith and love. Use our guidance system here at Stream, Deans, Tutor Teachers, staff and counsellors, just speak out and we pray to our God:

Tēnā koe mo to aroha
Ki ā mātou tē whānau
O' Hato Pateriki

Thank you for your love to us, family of St Patrick's College Silverstream

Sectare Fidem

Grahame Duffy, Rector

■ STAFFING

At the start of Term 4 we will welcome Mrs Jane Hambidge to the position of Deputy Rector. Jane is joining us from Chilton Saint James School and we will begin Term 4 with a Mihi Whakatau for Jane beginning at 9.00am on Monday 14 October. The community is welcome to join us for this. We wish Jane well in her role at the College.

■ LEAVE OF ABSENCE

The correct Ministry of Education process is a letter or email to the Rector. The Rector then needs to approve this leave in order for it to happen and families or students can then plan their holidays. This is a legal requirement to ensure we are meeting Ministry requirements regarding the non-attendance of students at the College.

Please send an email to absentee@stream.school.nz so that your request can be forwarded to the Rector.

■ MEASLES

The holidays will be a good time to get vaccinated for measles if you are not already, as it takes 12 - 14 days for the vaccine to work. If there is a case confirmed at school then students cannot attend for 14 days for every new case diagnosed. There is one confirmed case of Measles at a Wellington college. Attached at the back of this newsletter is a letter from the Regional Public Health for parents / caregivers if we get a confirmed case at Stream.

■ UNIFORM SHOP

Please note Uniform Shop Hours for Week 1 Term 4 only

Wednesday 16 October - UNIFORM SHOP CLOSED

Thursday 17 October - 12.30pm - 1.30pm

Friday 18 October - 8.00am - 9.30am

Reminder: Term 4 is Summer Uniform and no formal on Tuesdays except when advised.

■ BOARD OF TRUSTEES

In October 2018 the Board of Trustees asked parents, caregivers, whanau, and the wider St Patrick's College community to tell us how you thought the school was going and to share some ideas for the future. The response exceeded our expectations in the online survey and meetings.

Thanks to everyone who took time to give us your thoughtful answers. We have included a summary of the findings in the attached document. We have been incorporating the findings into our College and BOT business this year and will also plan ahead in our review of our strategic plan and business for next year.

The Community Consultation Survey Key Points Summary follows:

Dr Clare Couch

Board of Proprietors Representatives on the Board of Trustees





Community Consultation Survey Key Points Summary

The following information is a draft executive summary of the community consultation in October 2018 which involved:

Online survey: 346 respondents (90% parents of current students)

Community meeting: 12 parents, 4 SLT, 4 BOT members

The report has 5 sections:

Section 1: General information

Section 2: Thoroughly Catholic and Marist School

Section 3: Strong and abiding sense of community

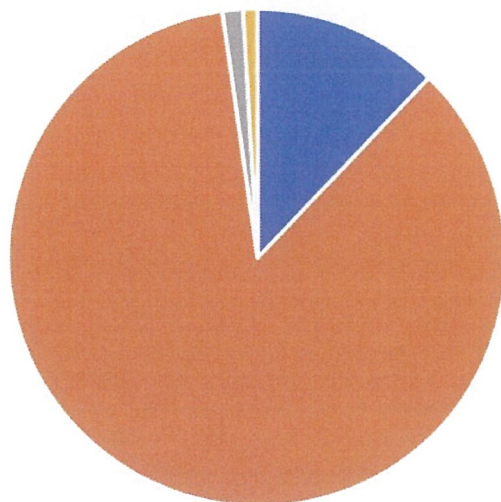
Section 4: A school of outstanding modern teaching and learning

Section 5: Looking ahead

College Vision: St Patrick's College, Silverstream is a boys' school of excellence, founded on Catholic and Marist values and traditions where students develop knowledge, skills, attitudes and values which enable them to become compassionate, just and successful citizens. Our students are challenged and motivated to achieve personal excellence in an innovative learning environment enhanced by tradition, superb facilities, quality teaching and a supportive College community.

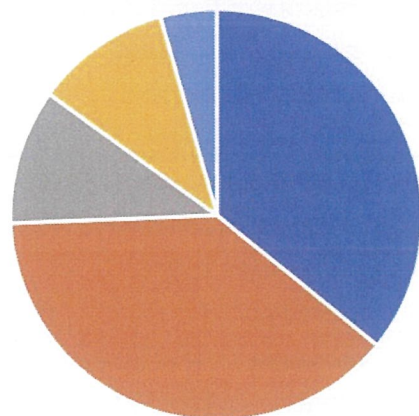
General Information

Survey Respondents



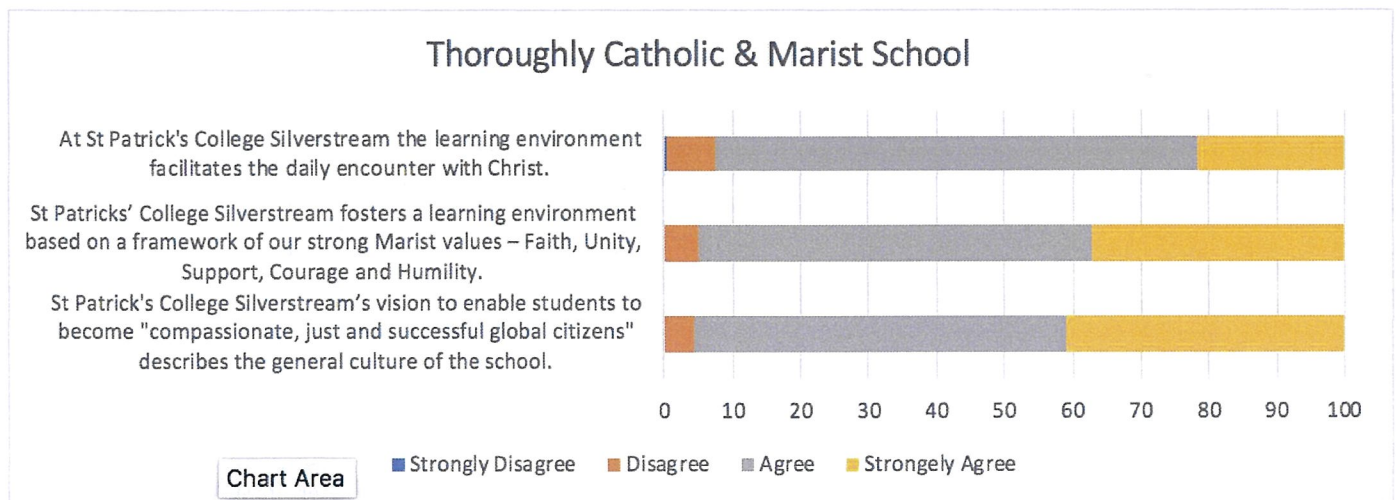
- Staff member
- Parents/Caregivers/Whānau
- Old Boy
- Member of the Community

Respondents relationships to students

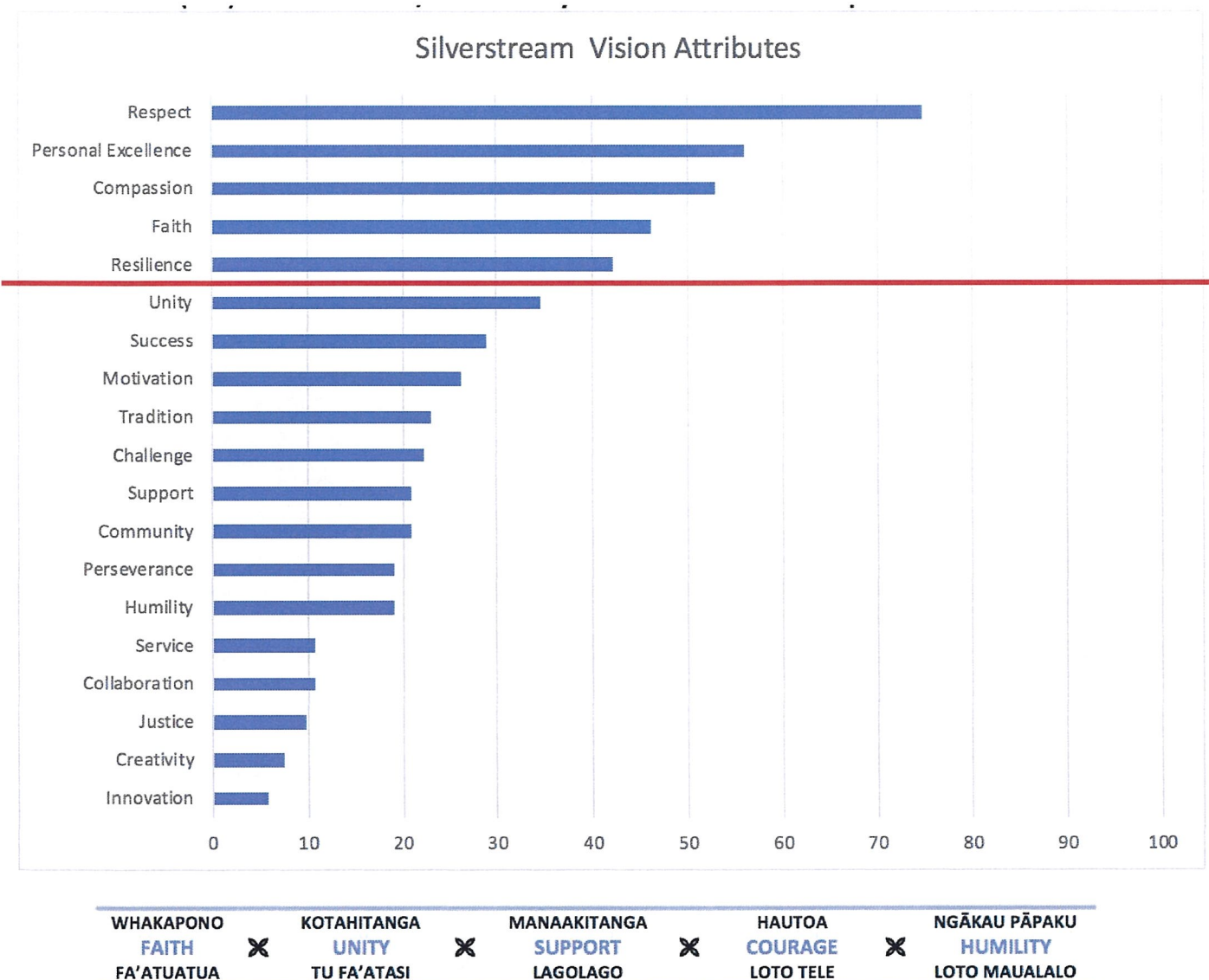


- A son in the Junior School (Years 9 & 10)
- A son in the Senior School (Years 11-13)
- No sons attending the College
- Sons in both the senior and junior school
- Other

Thoroughly Catholic and Marist School



Please choose (tick) the 5 attributes/values that you think are the most important for Silverstream:



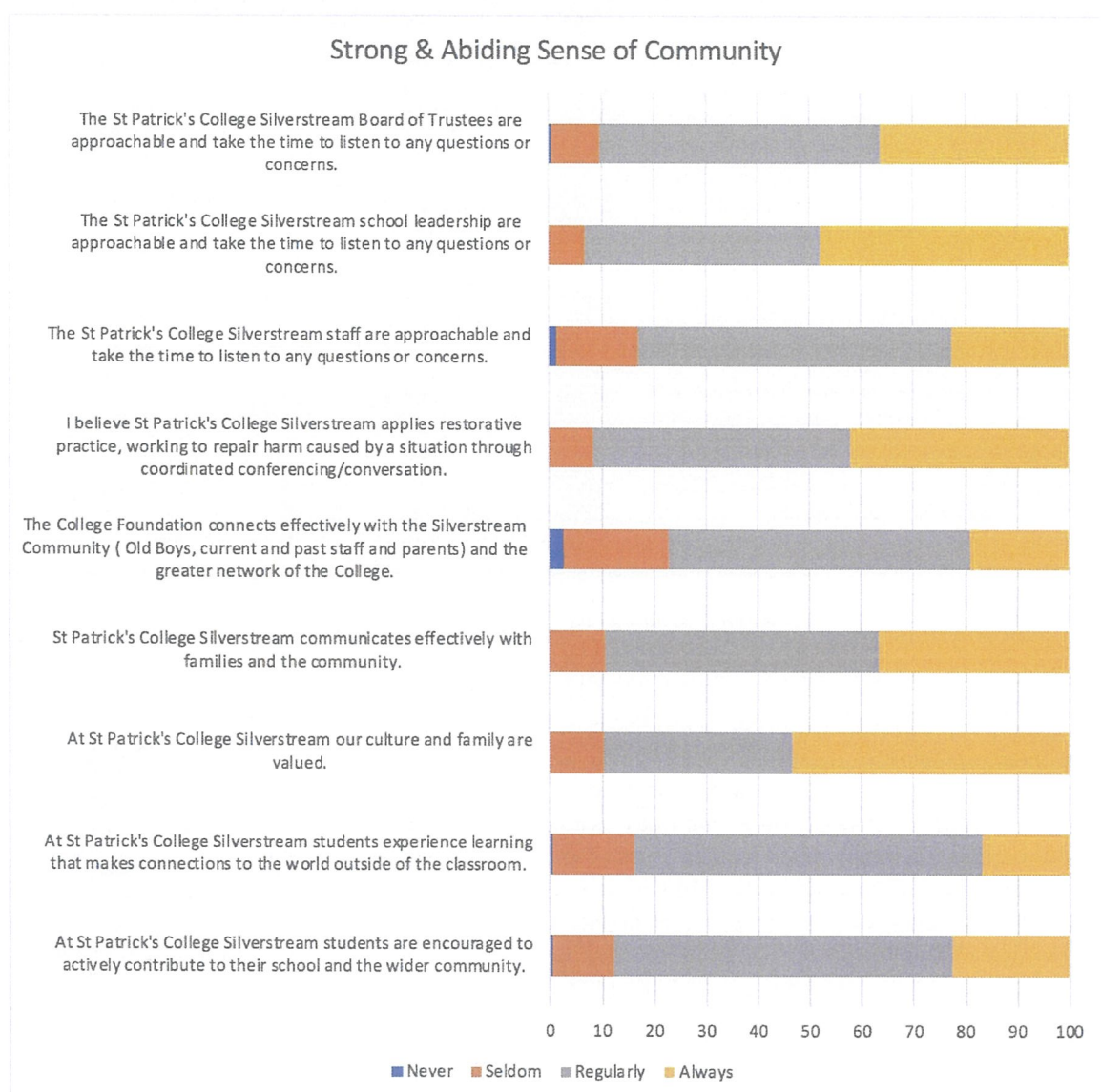
Our vision aspires to enable all our students to leave the College as “compassionate, just and successful global citizens”. To further develop our 'graduate profile' for the future - how would you complete this sentence? When students leave St. Patrick's College Silverstream they will be.....

Respondents identified these items (in descending order):

- “Well-rounded”, e.g. respectful, humble, confident, resilient, trustworthy, compassionate, hardworking, caring, socially conscious
- Community minded, e.g. contributing well to local and goal communities
- Ready and prepared for future life
- Young men who have grown in their faith and continue to live a life filled and led by faith in Christ.
- Well educated, e.g. achieved personal excellence, lifelong learners, ready for further education
- Culturally confident, e.g. confident in their own culture and knowledgeable in the history of Aotearoa/ NZ



Strong and abiding sense of community

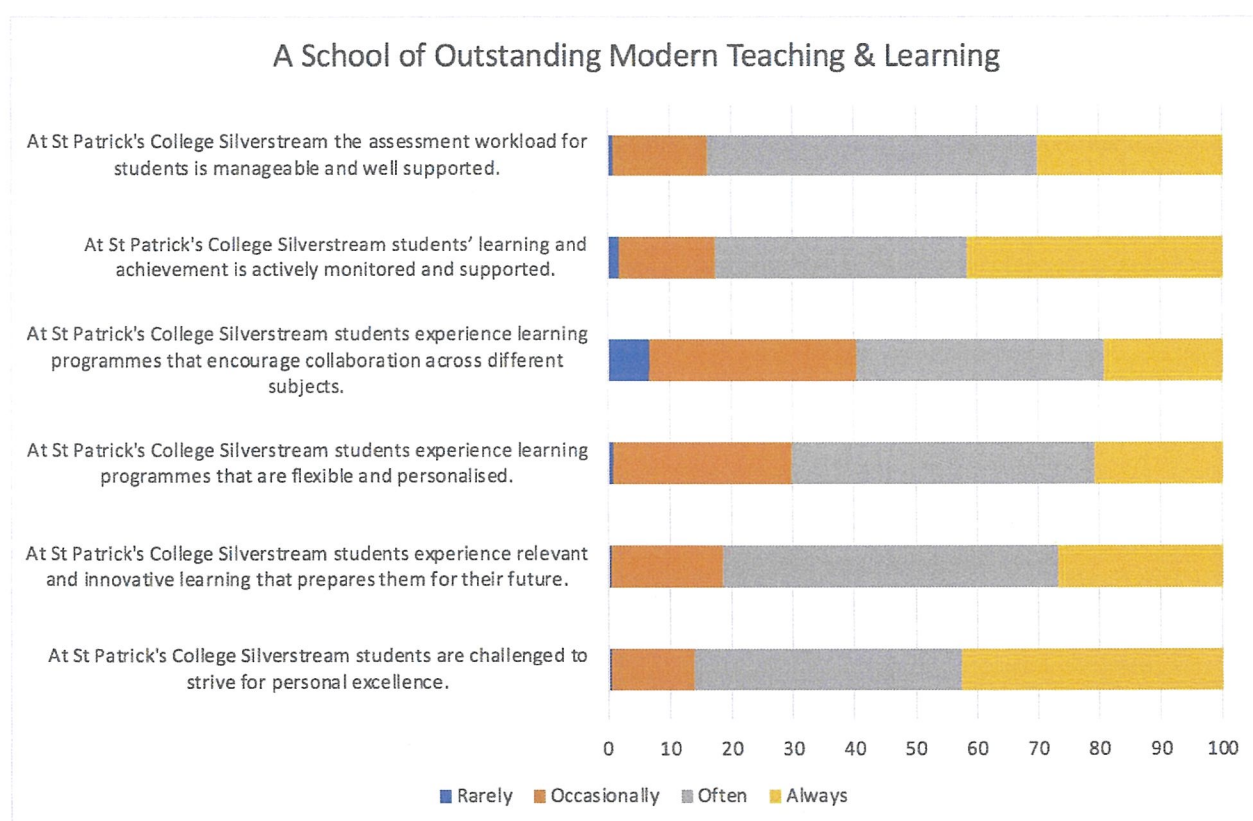


There was strong feedback given about increasing communication with the school community across all areas of school life, including ensuring that the BOT are visible and contactable. There was suggestion that the cultural responsiveness of the BOT would be enhanced by a regular presence at Maori and Pasifika parents meetings, as well as representation on the BOT. Many respondents said they didn't know who was on the BOT and what they did. Some respondents expressed sincere thanks and others concern about some decisions made by the BOT. In general the staff at St Patrick's Silverstream are seen to be approachable, restorative, and communicative and working towards a consistent school-wide approach to this would be desirable.

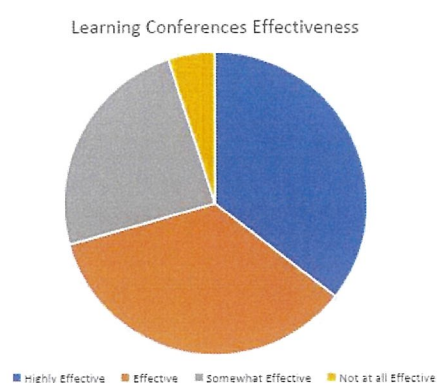
Many respondents were unaware of Foundation or its purpose and there were a range of suggestions for improved communication e.g., newsletter, LinkedIn Facebook, Twitter. There was strong support for increased events to raise profile of Foundation, e.g., align with Old Boys, information evenings/gatherings, reunions, hosting dinners around the country for Old Boys, golf days, cocktail nights, and hui to share who and what they are about.

There was feedback in support of the College strengthening community connections with the arts, culture and heritage of Aotearoa/ NZ, both in curriculum and opportunities outside of the classroom.

A school of outstanding modern teaching and learning



Respondents were extremely positive about Weekly Notes – particularly due to their regularity and usefulness. Feedback was positive about Learning Conferences, although there was suggestion that there could be better consistency in the quality of these. The community would still like more personalised and regular feedback from subjects teacher about academic progress and achievement. The Key Indicators appear to have mixed value to parents and there was request for less generic terminology and more specific feedback. There were requests for improved communication about home-learning, workloads, achievement and assessment, both in the Junior school and for NCEA. Learning would be enhanced by a continued focus on improving relational practice and developing more relevant and engaging content.



Looking ahead

What would you like the college to be offering students by 2021? Consider (without financial constraints) things such as: subject choices, timetabling, extra-curricular activities, facilities and what you would like the college to be well known for in the community.

- Many respondents requested more subject choices, e.g., more varied subjects, technology based subjects, programmes that reflect Maori culture, arts based activities, languages, stronger Te Reo Maori department
- Respondents indicated a real interest in the boys being involved in community service and contributing to outreach, e.g., students engaged in service, social justice focus, more in Duke of Ed,
- Many respondents asked for improved facilities, e.g., improved buildings, stronger creative arts department, tennis courts, new swimming pool, aquatic centre, athletics track, improved cricket facilities
- It was evident from responses that people were interested in the boys achieving academic excellence, e.g., flexible learning spaces
- There were many answers that indicated that they wanted the boys to be known for being well-rounded, e.g., more than just sports, and to include other extracurricular activities.
- One theme that emerged was that people wanted to school to be known for being values based, although there was little clarity about what those values might be.
- Respondents indicated that it would be important for the college to provide career/ work exploration (e.g., career workshops) for the boys.
- There were many responses that indicated that the college should be known as a Marist/ Catholic school with increased opportunities for faith development. A result of this is that the boys will develop to be strong faith filled good men.
- There were strong responses that all boys in the college learn about the heritage and culture of Aotearoa/ New Zealand. In particular, that the Maori boys will develop a strong identity as Maori and that overall there is an increased learning in Te Reo Maori.
- There was a variety in responses from people so, for some it was important that the school also be known for excellence at sports, traditions, and boarding.

What specific opportunities, ideas, or actions would you like to see the college pursue to continue to give effect to the vision by 2021?

- There was strong support from respondents that the boys engage in more community outreach, e.g. compulsory service in Yr 9 & 10, community day for outreach.
- Many people said it was important to focus on overall well-being for the boys, e.g. life skills, learning to be supportive, well-rounded education, emotional well-being of the boys, learn about respect and consent towards each other and women.
- Respondents were keen that there be high quality teaching, e.g. improving teaching practice, more flexibility in the timetable, more opportunities for Professional Development for staff.
- Many indicated that they wanted the college to support career/ work exploration for the boys, e.g., opportunities for work placements, financial budgeting.
- One action that many said was important for the college to pursue was excellence and high academic performance, and suggestions were given for more arts subjects (including music) and more attempts at scholarships.
- Academic subjects were the focus of many answers and suggestions included, offering more course options, increased technology, more arts, and cultural projects.
- Many indicated that the school should pursue a Marist/ Catholic character and suggestions included, to uphold a faith led education and supply scholarships for Religious Study.
- Many indicated that the college should develop confident Maori/ Pacific identity for the college and the boys, e.g., more support for Maori learners, strengthen relationship with mana whenua, and more cultural activities.
- It was suggested that the college continue to build and further develop sports excellence, e.g. support all teams- not just the top teams and to encourage other sports than rugby.
- General statements were made by some that the college focus on building values, improving facilities, provide boarding, and consider international students.

Current educational discussion includes a focus on the relevance of NCEA Level 1, technology in schools, mental health and our young people, cross-curricular subjects and inquiry-based/project-based learning. What do you see as priority areas for Silverstream to focus on in the future and why?

- There was overwhelming support that the college give priority on developing positive mental health for all, e.g. knowledge about mental health and how to deal with it for students and staff, building resilience for students.
- Many respondents indicated that the college should prioritise technology and that it was important that boys learn these skills and that they also balance this with other skills/ abilities. There was support for development of the arts at the college.
- There was keen interest in NCEA. For example people thought stepping from Level 1 to the higher levels is helpful but that there needed to be more understanding about NCEA, that exams at Level 1 prepare for Level 2 and to focus on how NCEA is delivered through to level 3. Many indicated that they thoughts NCEA Level 1 is still relevant.
- Many people expressed a priority for the college to support the boys in career/ experience, e.g., opportunities for learning life skills, problem solving, focus on training in trades.
- It was often suggested that the wellbeing of the boys be a priority for the college, e.g., focus on the boys learning to build respectful relationships, increase resilience, and to develop self-management skills.
- Respondents indicated that inquiry based learning should be a focus for the college, e.g., creative thinking, work alongside others, personalised learning.
- A key area of interest expressed by people was the the college prioritise being Marist and Catholic, e.g., focus on learning about Christian roots, focus on Christian values, faith based approach to mental health (along with Ministry recommendations),
- One area that was strongly articulated was that the college prioritise the development of increased cultural identity/ diversity, e.g. cultural awareness/responsiveness, support for Te Reo and Tikanga Maori.
- People indicated that they wanted teaching to be a priority and to focus on improving teaching ability, increased professional development and supporting teachers.
- Some people wanted the school to prioritise the student voice, e.g., include student voice, ensure a good cross section of input is captured.

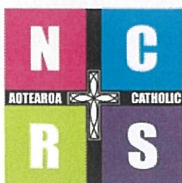
WHAKAPONO FAITH FA'ATUATUA	✕	KOTAHITANGA UNITY TU FA'ATASI	✕	MANAAKITANGA SUPPORT LAGOLAGO	✕	HAUTOA COURAGE LOTO TELE	✕	NGĀKAU PĀPAKU HUMILITY LOTO MAUALALO
----------------------------------	---	-------------------------------------	---	-------------------------------------	---	--------------------------------	---	--

■ YOUNG VINNIES

On Sunday 25 August a small group of our Young Vinnies represented our College at the annual Secondary School Vinnies mass. Great to see our Faith in Action.



■ NATIONAL CENTRE FOR RELIGIOUS STUDIES



te pūhāhi a motu mō ngā akoranga whakapono
national centre for religious studies



CENTRE FOR
SCIENCE & CITIZENSHIP



the nathaniel centre
THE NEW ZEALAND CATHOLIC BIOETHICS CENTRE

The National Centre for Religious Studies¹, the Centre for Science and Citizenship², and The Nathaniel Centre³ wish to understand young people's thinking about some significant issues of our times. To do this, they are inviting all Year 13 students in Catholic schools across the country to take part in a **short, anonymous online survey called "What Is Your Stand?"** Each question in the survey outlines a particular issue and asks the student where they stand on this issue. They are then asked to provide reasons for their stance. The results of the surveys will be used to improve the national Catholic Religious Education Curriculum. The results will also provide insights into the ways that young people are responding to the world in which they find themselves and the ethical issues that arise here. The survey is the first step of a larger project in which the researchers will explore (via focus groups) how young people are conceptualising and navigating the ethical challenges with which they are confronted.

¹ www.tci.ac.nz/ncrs

² www.enquiringminds.education/csc-trust

³ www.nathaniel.org.nz/

■ CONGRATULATIONS

- **Richard To'ia** played for the U23 Wellington Men's Netball Team who competed in the National Netball Tournament last week. They came 2nd. From this Richard has been selected for the NZ Men's Netball 23 and Under World Cup Squad. The squad is due to be cut to 12 and will play in the inaugural Men's Netball World Cup being played in Perth Australia in 2020.
- **Jayden Ford and Will O'Connor** have been selected for the Wellington Junior Interprovincial Golf Team which looks to defend its national title *The Boys* team who triumphed in 2018, are lead by NZ U15 Champion and NZ U19 runner up, Jayden Ford. The team plays match-play off the stick, the number 5 and number 6. players are U16 age bracket.
- **Ryan Jackson** has been selected in NZ U19s to play Bangladeshi U19s in a 5 game one day series down Christchurch from 29 September - 13 October. (Outdoor cricket)



- **Staff Football team at New Zealand Marist Football Tournament**



The weekend of 14 and 15 September saw the staff football team (comprising current and ex staff, old boys and parents) travel to Hastings to compete in the annual Marist Football Tournament. Buoyed by last year's success the team departed Silverstream in high spirits, travelling in style courtesy of Kevin Mcevoy's (Upper Hutt Car Sales) support. The team was generously hosted by the Roseingrave family at their Lonestar Masterton restaurant on the outward and return journeys, enjoying a sumptuous range of burgers and steak sandwiches.

In hindsight we may have over-indulged if Saturday's results were anything to go by.

A Reuben Pivac tap-in goal in the opening half of the first game hinted at a successful day's football. Unfortunately this was to be the highlight of the day as injuries and experienced, determined opposition made all four games a real challenge.

The final match, a Sunday morning showdown against an ex All-White laden team, was a highlight in terms of our persistence and never-say-die attitude.

A Michael O'Connell 30 metre bullet into the top right corner of the opposition's net saw the team finish on a high. A huge thank-you to Upper Hutt Car Sales, Lonestar Masterton, Sense Partners and CCFreelance for their generous support.



■ CROSS COUNTRY

12 – 16 expert 85cc

We had to race for an hour and a half on a 15km track. The track took 25 minutes per lap and I did four laps. The scored it on in how many laps you can do and if people tied on laps then it's who came in first. In total there were 22 riders and I got 2nd in New Zealand. It took me an hour and forty five to finish and the winner finished 20sec before me.

Sunday Foxton Club Championships

I double classed at Foxton, so I rode in the 125cc class on my 85cc. In the first 125cc race I got first and in the other two I got two seconds. In my 85cc races I won all my races and got first overall. In the 125cc I got fourth overall in the 125cc event. The whole club championship was on four different weekends.

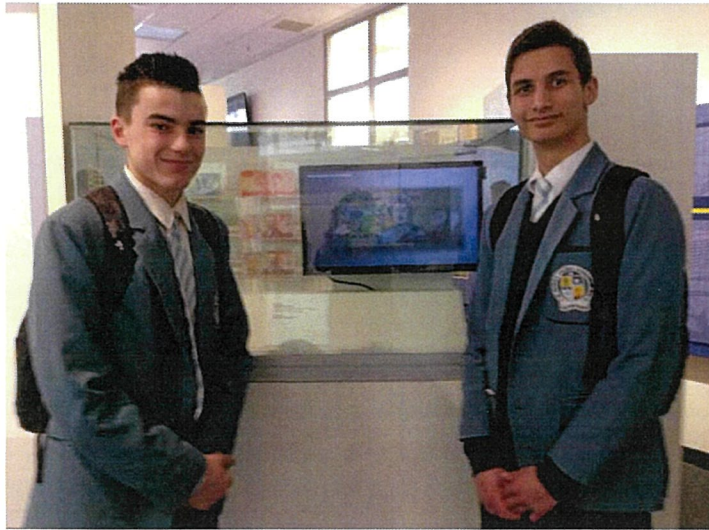
Boston Doherty, Year 9



■ LEVEL 2 ECONOMICS

On 9 September the level 2 Economics class caught a train into Wellington where we visited both the Reserve Bank and the Treasury. First, we went to the Reserve bank where we learnt about the different practices in place to control the economy's stability, security and inflation. After this we were able to explore the Reserve Bank and learn a bit more about its history. Next we went on to the Treasury where we learned about the government and its role in the economy alongside some of the decision they have to make. This made for a very educational and informative trip as well as a good look into a real-world economy.

Shaydon Sutherland, Year 12



■ VISUAL ARTS NEWS

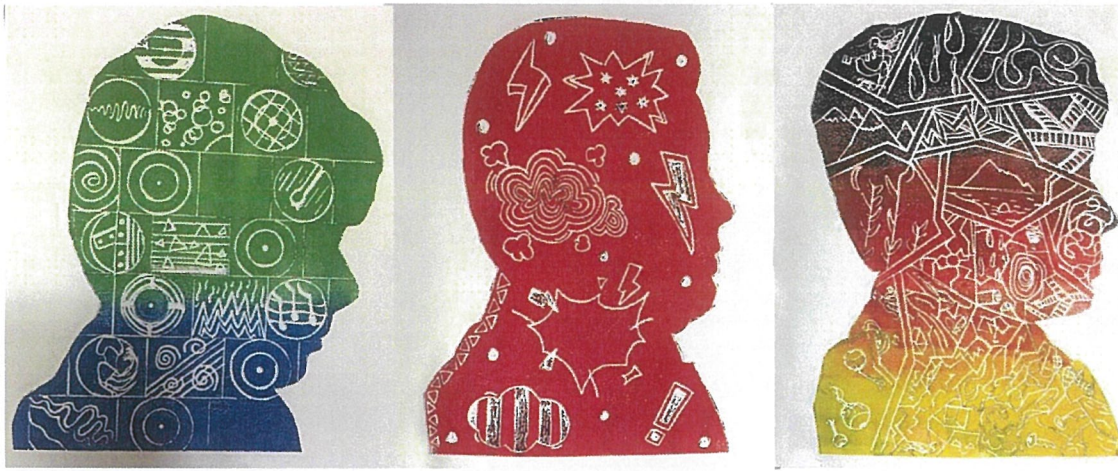
There has been lots of printmaking going on across year levels in the Art Department this term with some awesome results.

Printmaking is an interesting combination of creating art and hands on craft construction, as art has to be thought up and then plates constructed, followed by images being manually printed. This offers students lots of different types of challenges to be overcome.

This year it has been awesome to be able to accept a very kind donation of expensive printing inks that we would otherwise have not been able to obtain. This kind donation was made by **Judy Bell** and her team at **Hubergroup New Zealand Limited**. A local business based in Melling, Lower Hutt.

The Art Department and the students are very thankful for this kind donation and we took full advantage of getting stuck into the inks the day they arrived.

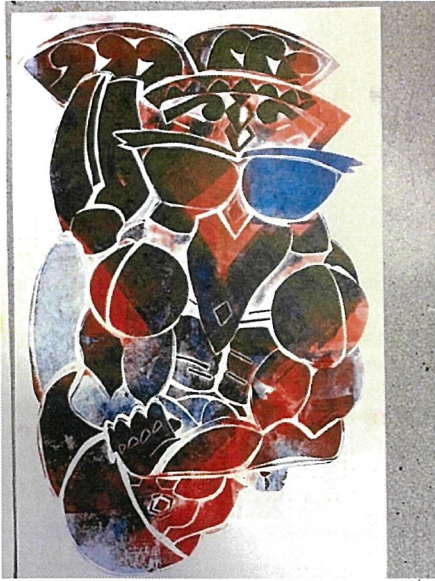
Here are some of the resulting images created by students:



Year 9 Foam Board prints

Year 10 Collagraphs





Year 10 Collagraph



Year 13 Drypoint

6 September 2019

Public health advice for schools (to school principals and Boards of Trustees)

As you know, there is a large and increasing measles outbreak in Auckland with over 800 confirmed cases and over 1,000 cases nationally. There have been 21 cases in the Wellington region this year.

Measles is likely to continue in NZ for months with travel, school holidays, interschool events and tournaments all increasing the likelihood of further measles spread. Safeguarding your children from measles will help ensure they don't miss learning opportunities, NCEA school exams, and interschool sports and cultural activities.

We are asking schools to help us share information with their parent and staff community to raise awareness of what people can do now to prevent further spread of the disease.

We encourage staff and parents/caregivers to protect themselves and their children from measles by being fully vaccinated. Due to the increased demand for the MMR vaccine as a result of the current outbreak in Auckland, we advise anyone who is not protected to first check their medical centre's website or phone to see when they will be able to vaccinate you.

It is also important that your community are informed that anybody (staff or student) not known to be immune will be quarantined and excluded if measles occur in your school.

What schools can do NOW to protect students and staff

Messaging for staff and parents - attached as appendices

RPH has drafted the following messaging to send to parents, caregivers and staff (teaching, administration, support, parent helpers, sports coaches etc.):

- A letter to be sent to the whole school community (parents, caregivers and all staff).
- A message to post on other communication platforms i.e. Facebook, School Apps etc.
- Posters to place on school noticeboards etc.

Immunisation Register

Ensure your Immunisation Register¹ is up to date (these registers are a legal requirement for primary schools and early childcare education centres). Ensure that you also record the immunisation status of all your **workforce** born after 1/1/1969.

¹ All primary schools are required to maintain an immunisation register. Other schools may elect to do so. An up-to-date registers will make managing quarantine for susceptible children, young people and staff much easier.

What will happen if there is measles at your school

If a pupil or staff member at your school is diagnosed with measles, you will be contacted by Regional Public Health (RPH) and we will require you to take the following actions:

- Ensure the person with measles is not at school while they are infectious - we will advise on safe return date.
- Quarantine/exclude children/ pupils / staff **who do not have evidence** (WellChild book, print out from the GP) **of measles protection** (see appendix 1 for details) for **up to 14 days after their last contact with the infectious person**. RPH will provide the dates for the quarantine period. Note the quarantine period will be extended if there are further cases at the school.

If someone else informs you of measles in your school we recommend you ensure that the person is isolated at home and then **check with us** before taking any further action. You do not need to undertake any action unless the case is confirmed by RPH. We are frequently “chasing rumours” of measles (or other notifiable diseases) and would prefer to ensure the illness is confirmed (or at least probable) before disrupting your operations and alerting your community.

Further resources

- Important health information and resources including fact sheets (in multiple languages) and posters can be found at: www.rph.org.nz/measles/
- For information on measles see: Ministry of Health – www.health.govt.nz/measles or Health Navigator – <https://www.healthnavigator.org.nz/health-a-z/m/measles/>

Measles will be very disruptive to the school community and we therefore recommend that you share this information with your staff and parents so that they can be prepared – either by having their documents ready or immunising now if they are not protected.

You can contact RPH for further advice if required on 04 570 9002.

Thank you for your help in reducing the impact of measles in your community.

Yours sincerely

Dr Annette Nesdale
Medical Officer of Health
Greater Wellington Region

Appendix 1. UPDATED advice on measles protection and immunisation

Check here to see if children are protected:

AGE	PROTECTED?
0-6 months of age	May have some protection from their mother from pregnancy and during breast-feeding.
6 months to 12 months	Not protected - but can be vaccinated early if: <ul style="list-style-type: none">• If travelling to a high risk country overseas.• Specific risks identified after discussion with their GP NOTE: The child will still need another 2 doses of MMR after 12 months of age.
12 to 15 months	Not protected. NEW ADVICE- If traveling to Auckland it is recommended to have the 15 month immunisations (includes the 1st measles vaccine) early from 12 months of age.
15 months until 4 th birthday	One documented dose of MMR = fully immunised for age.
4 years to 19 years	Two documented doses of MMR = fully immunised for age.

Check here to see if an adult is protected:

YEAR BORN	PROTECTED?	RECOMMENDED ACTION
Born before 1 January 1969 in NZ	Yes, assumed protected as measles was common in NZ at this time.	No action required.
Born between 1969 and 1980 (inclusive) in NZ	Probably not – received only 1 measles vaccine which may have been given at 10 months of age when less effective.	Get a second MMR vaccine.
Born between 1981 to 1990 (inclusive)	Protected if you had two measles vaccines.	Check if you have had two measles vaccines. If in doubt, get a second MMR vaccine.
Born between 1991-1996 in NZ	People born 1991 to 1996 may not have had a second measles vaccine. This was when the second measles vaccine (MMR) was changed from 11 years to 4 years. Children aged five to 10 years at this time were offered catch up MMR vaccine through schools, but uptake and coverage was not high.	Check if you have had two measles vaccines. If in doubt, get a second MMR vaccine.
Born in NZ from 1 January 1997	Protected if you have had two measles vaccines – usually given at 12-15 months and then at four years.	Check if you have had two measles vaccines. If in doubt, get a second MMR vaccine.

Appendix 2 - Messaging for schools to send out eg FB, Alert app, School website:

Important information about Measles – public health advice for all parents

We have received important information from Regional Public Health regarding the measles outbreak and steps we need to take to protect our school community. Please read the information found on the below links.

Link to letter to parents. www.rph.org.nz/measles

Link to RPH website with fact sheets, posters etc <http://www.rph.org.nz/measles/>

Link to Ministry of Health – www.health.govt.nz/measles

Appendix 3 Template letter for staff and parents

Measles – important information from Regional Public Health (RPH)

As you know, there is a large and increasing measles outbreak in Auckland with over 800 confirmed cases and over 900 cases nationally. There have been 21 cases in the Wellington region this year.

Measles is likely to continue in NZ for months with travel, school holidays, interschool events and tournaments increasing the likelihood of further measles spread.

Safeguarding your children from measles by being fully vaccinated, keeping students and staff off school and excluding those who have been exposed but are not immune will all help protect others, especially those at risk of complications from disease. It will also help to ensure they don't miss learning opportunities, NECA school exams, arts and sports tournaments and school balls.

To protect your child and their school RPH recommends the following actions NOW

- Check the table below to see if you and your whanau are protected from measles
- If you are travelling to Auckland, especially South Auckland make sure you are vaccinated. This advice NOW includes babies aged 12-15 months who are recommended to have their first measles vaccine early before going to Auckland.
- If you are not vaccinated we advise you to check your medical centre's website or phone to see when they will be able to vaccinate you. The current measles outbreak in Auckland has led to an increased demand for the MMR vaccine.
- Talk to your doctor if you are travelling overseas; especially if you have babies aged 6-12 months.
- Provide a copy of your child's immunisation records to your school when asked. This information can be found:
 - a. Wellchild book
 - b. Asking your medical centre for a printout of your/ your child's immunisations
 - c. For children aged 0 to 14 years the parent can email RES-NIR@huttvalleydhsb.org.nz and ask for a copy of your child's National Immunisation Register record. We will need the child's NHI number (if known), full name, date of birth, including mum's first and last name. This will ensure we get the correct record if there are children with similar names born on the same day.
- If your children are NOT protected from measles start thinking about alternative arrangements if there is confirmed measles at your school. Children who are not protected CANNOT attend school, sports or social events for up to 14 days after their last contact with the infectious person. This date will be extended if there are further cases in the school.

Measles will be very disruptive to the school community and we want parents/caregivers and students to be prepared and protected – either by having your immunisation records ready or immunising now if you are not protected.

You can contact Regional Public Health for further advice if required on 04 570 9002.

Thank you for your help in reducing the impact of measles in your community.

Check here to see if children are protected:

AGE	PROTECTED?
0-6 months of age	May have some protection from their mother from pregnancy and during breast feeding.
6 months to 12 months	Not protected - but can be vaccinated early if: <ul style="list-style-type: none"> • If travelling to a high risk country overseas. • Specific risks identified after discussion with their GP NOTE: The child will still need another 2 doses of MMR after 12 months of age.
12 to 15 months	Not protected. NEW ADVICE- If traveling to Auckland it is recommended to have the 15 month immunisations (includes the 1st measles vaccine) early from 12 months of age.
15 months until 4 th birthday	One documented dose of MMR = fully immunised for age.
4 years to 19 years	Two documented doses of MMR = fully immunised for age.

Check here to see if an adult is protected:

YEAR BORN?	PROTECTED?	RECOMMENDED ACTION?
Born before 1 January 1969 in NZ	Yes, assumed protected as measles was common in NZ at this time.	No action required.
Born between 1969 and 1980 (inclusive) in NZ	Probably not – received only 1 measles vaccine which may have been given at 10 months of age when less effective.	Get a second MMR vaccine.
Born between 1981 to 1990 (inclusive)	Protected if you had two measles vaccines.	Check if you have had two measles vaccines. If in doubt, get a second MMR vaccine.
Born between 1991-1996 in NZ	People born 1991 to 1996 may not have had a second measles vaccine. This was when the second measles vaccine (MMR) was changed from 11 years to 4 years. Children aged five to 10 years at this time were offered catch up MMR vaccine through schools, but uptake and coverage was not high.	Check if you have had two measles vaccines. If in doubt, get a second MMR vaccine.
Born in NZ from 1 January 1997	Protected if you have had two measles vaccines – usually given at 12-15 months and then at four years.	Check if you have had two measles vaccines. If in doubt, get a second MMR vaccine.

Measles

It isn't just a little rash

Measles can be dangerous, especially for **babies, children and pregnant women.**

Measles symptoms typically include:

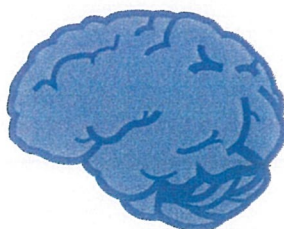
- High fever (may spike to more than 40°C)
- Cough
- Runny nose
- Red, watery eyes
- Rash may develop 3–5 days after symptoms begin



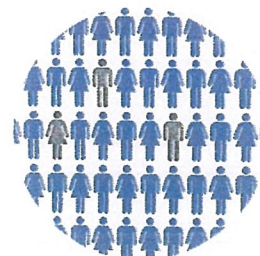
Measles can be life threatening:



1 out of 3 people who get measles may be hospitalised.



1 out of every 1,000 people with measles may develop brain swelling which may lead to brain damage.



1 out of 1,000 people with measles may die from complications.

You can protect your children with vaccination.
Talk to your GP or practice nurse.

Measles

Top 3 things parents need to know about measles

An unprotected (or unvaccinated) child can get measles when travelling overseas and also at home in New Zealand.

This is a list of some of the most important facts you need to know about measles.

Measles can be serious.



Some people think of measles as just a little rash and fever that clears up in a few days, but measles can cause serious health complications, especially in children younger than 5 years of age. There is no way to tell in advance the severity of the symptoms your child will experience.

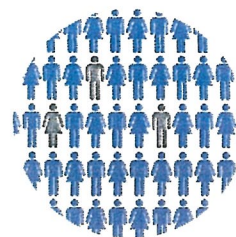
- 1 out of 3 people who get measles may be hospitalised.
- 1 out of every 1,000 people with measles may develop brain swelling which may lead to brain damage.
- 1 out of 1,000 people with measles may die from complications.

Some of the more common measles symptoms include:

- High fever (may spike to more than 40°C)
- Cough
- Runny nose (corzya)
- Red, watery eyes (conjunctivitis)
- Rash (3 – 5 days after symptoms begin)

Measles is very contagious.

Measles spreads through the air when an infected person coughs or sneezes. It is so contagious that if one person has it, up to 9 out of 10 people around them will also become infected if they are not protected. Your child can get measles just by being in a room where a person with measles has been, even up to one hour after that person has left. An infected person can spread measles to others even before knowing they have the disease.



You can protect your child against measles with a safe and effective vaccine.

The best protection against measles is the measles-mumps-rubella (MMR) vaccine. *Two doses of MMR vaccine provide the best protection:*

- The first dose at 15 months of age
- The second dose at 4 years of age

Travelling to Auckland

NEW ADVICE: It is recommended that babies 12–15 months **travelling to Auckland** have their MMR early.

Travelling overseas

People with babies 6–12 months travelling overseas to countries with large measles outbreak should talk to their doctor about early vaccination.

Don't **ASSUME** *You're* **IMMUNE**

to measles.

**IT'S
FREE!**

To get immunised now, talk
to Student Health or your
family doctor or nurse.

Not only children get measles.
Protect yourself and your family.

Call **0800 IMMUNE** or visit
health.govt.nz/measles for more info

Appendix 3 Template letter for staff and parents

Measles – important information from Regional Public Health (RPH)

As you know, there is a large and increasing measles outbreak in Auckland with over 800 confirmed cases and over 900 cases nationally. There have been 21 cases in the Wellington region this year.

Measles is likely to continue in NZ for months with travel, school holidays, interschool events and tournaments increasing the likelihood of further measles spread.

Safeguarding your children from measles by being fully vaccinated, keeping students and staff off school and excluding those who have been exposed but are not immune will all help protect others, especially those at risk of complications from disease. It will also help to ensure they don't miss learning opportunities, NECA school exams, arts and sports tournaments and school balls.

To protect your child and their school RPH recommends the following actions NOW

- Check the table below to see if you and your whanau are protected from measles
- If you are travelling to Auckland, especially South Auckland make sure you are vaccinated. This advice NOW includes babies aged 12-15 months who are recommended to have their first measles vaccine early before going to Auckland.
- If you are not vaccinated we advise you to check your medical centre's website or phone to see when they will be able to vaccinate you. The current measles outbreak in Auckland has led to an increased demand for the MMR vaccine.
- Talk to your doctor if you are travelling overseas; especially if you have babies aged 6-12 months.
- Provide a copy of your child's immunisation records to your school when asked. This information can be found:
 - a. Wellchild book
 - b. Asking your medical centre for a printout of your/ your child's immunisations
 - c. For children aged 0 to 14 years the parent can email RES-NIR@huttvalleydhsb.org.nz and ask for a copy of your child's National Immunisation Register record. We will need the child's NHI number (if known), full name, date of birth, including mum's first and last name. This will ensure we get the correct record if there are children with similar names born on the same day.
- If your children are NOT protected from measles start thinking about alternative arrangements if there is confirmed measles at your school. Children who are not protected CANNOT attend school, sports or social events for up to 14 days after their last contact with the infectious person. This date will be extended if there are further cases in the school.

Measles will be very disruptive to the school community and we want parents/caregivers and students to be prepared and protected – either by having your immunisation records ready or immunising now if you are not protected.

You can contact Regional Public Health for further advice if required on 04 570 9002.

Thank you for your help in reducing the impact of measles in your community.